



# TOPIC 4:

## **SUPPORTING PEOPLE WITH DYSPHAGIA**

---

# REGULATOR REVELATIONS



On review of care records, we found two people required a modified diet due to their risk of choking. We discussed this with staff including but not limited to, the manager, provider and cook on day 2 of our assessment visit and they were **unaware of this requirement**. This meant people were provided with meals and snacks at the incorrect consistency they had been assessed to require...

Although the service completed 'choking screening tools' to establish risk of choking for people, **risk assessments were not completed** when these were indicated. Additionally, when the outcome of the completed tool indicated a referral to specific healthcare professionals was needed, this had not been done which meant **people's risks were not effectively identified, managed or reviewed**, placing them at continued risk of significant harm.

---

CARE HOME OVERALL RATING: **INADEQUATE**  
INVOLVING PEOPLE TO MANAGE RISKS: 1

# WHAT SHOULD WE DO?

1 Ensure appropriate risk assessments, and SALT assessments are completed for each person with a swallowing difficulty.

2 Ensure all relevant team members, including kitchen staff, have received appropriate training on how to support a person with dysphagia.

Check out our '[Dysphagia: Supporting People with a Swallowing Difficulty](#)' Online Interactive Workbook

3 Complete our free downloadable [competency assessment](#) to make sure your staff know how to practically support a person with dysphagia in your care setting.

CONTACT THE TEAM AT OPUS  
TODAY

 0333 939 0053

 [info@opuspharmserve.com](mailto:info@opuspharmserve.com)

 [opuspharmserve.com](http://opuspharmserve.com)

|                       |  |
|-----------------------|--|
| Name:                 |  |
| Organisation:         |  |
| Workbook start date:  |  |
| Workbook finish date: |  |

**OPUS**  
EXPERTS IN MEDICINES TRAINING



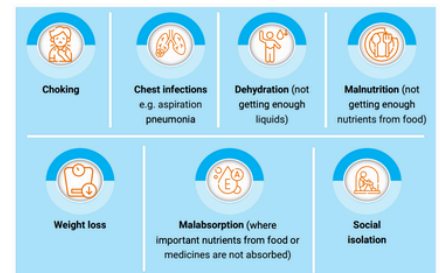
## Dysphagia: Supporting People with a Swallowing Difficulty

Online Interactive Workbook


### Serious Complications of Dysphagia

We've looked at the signs a person experiencing a swallowing difficulty may show, and the importance of recognising these. If these signs are not identified, or if the person's swallowing difficulty is not managed appropriately, they are at potential risk of **serious complications**.

These might include:



Let's take a look at these in a little more detail.

 A person may **choke** if food gets stuck in their throat and blocks their airways.  
Look out for the following signs:

